



koolvac

Robotic vacuum cleaner

Owner's Manual



The **SMART** Floor
& Carpet Vacuum

WARRANTY:

This KOOLATRON product is warranted to the retail consumer for 1 year from date of retail purchase, against defects in material and workmanship.

WHAT IS COVERED:

- Replacement parts and labour.
- Transportation charges to customer for the repaired product.

WHAT IS NOT COVERED:

- Damage caused by abuse, accident, misuse, or neglect.
- Transportation of the unit or component from the customer to Koolatron.

IMPLIED WARRANTIES:

Any implied warranties, including the implied warranty of merchantability are also limited to duration of 1 year from the date of retail purchase.

WARRANTY REGISTRATION:

Register on-line at www.koolatron.com or keep the original, dated, sales receipt with this manual.

WARRANTY AND SERVICE PROCEDURE:

If you have a problem with your KOOLVAC, or you require replacement parts, please telephone the following numbers for assistance:

North America 1-800-265-8456

The Service Advisors will advise you on the best course of action. Koolatron has Master Service Centres at these locations:

Koolatron
4330 Commerce Dr.
Batavia
New York 14021
U.S.A.
585-343-6695

Koolatron
27 Catharine Ave.
Brantford
Ontario N3T 1X5
CANADA
519-756-3950

A Koolatron Master Service Centre must perform all warranty work. Service after warranty may be obtained at a Master Service Centre or at an authorized service dealer. A complete listing will be mailed on request. Purchase Receipt is required to establish warranty eligibility.

KOOLVAC Robotic Vacuum Cleaner

Contents	Page
Introduction	1
Important Safety Instructions	2
Unpacking and Set-up	2
KOOLVAC Illustrations	3
Battery Installation and Charging Procedures	4
Battery Life Indicator	5
Preparing to Clean	6
Starting and Stopping	7
Dustbin and Filter Maintenance	8
Rotating Brushes Maintenance	9
Wall Clearance Adjustment	10
Side Brush Maintenance	10
Troubleshooting	11
Warranty Information	12

Introduction

Thank you for purchasing KOOLVAC. Before using this unit, read this Owner's Manual completely and retain it in a safe place for your future reference.

KOOLVAC will automatically clean your floor without much assistance or supervision. With a vacuum and agitator brush design, this device diligently cleans common smooth household floor surfaces including hardwood, linoleum, tile, and concrete as well as low pile carpet.

When KOOLVAC starts cleaning, it travels around the floor in a spiral pattern. Its non-marring bumper will contact a wall, or it may try to find a wall after spiralling for a while and gradually enlarge its operating area to cover the space. Once it comes into contact with a wall or furniture, the vacuum cleaner will progress along the obstruction. The side brush will draw in dirt, dust and debris from along the wall or around the furniture as KOOLVAC criss-crosses the room in straight lines. KOOLVAC repeats this cleaning pattern until its cleaning time has elapsed. This pattern is designed to provide maximum coverage of the room.

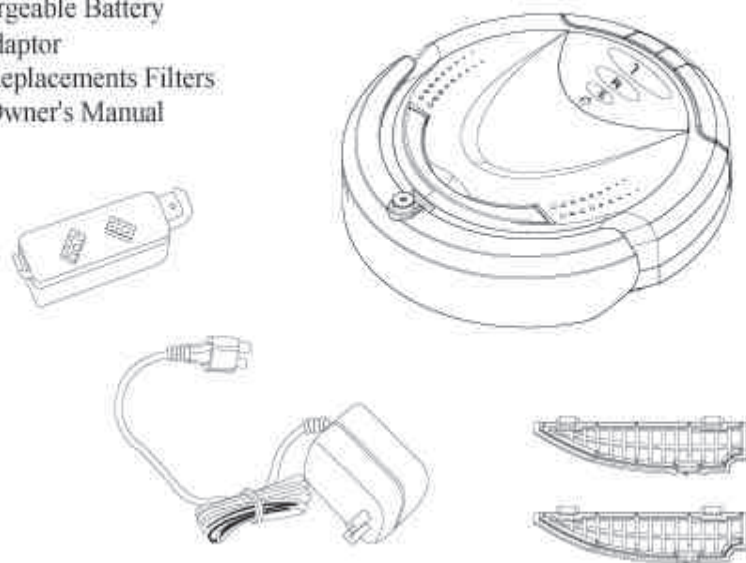
Safety Instruction For Using KOOLVAC

- This device is only meant for indoor use.
- Before using this device, pick up objects like clothing, loose papers, pull cords for blinds or curtains, power cords and any fragile objects. If the device passes over a power cord and drags it around, there is a chance that the corded object may tumble off a table or shelf.
- Do not use KOOLVAC on wet surfaces or where contact with water or immersion in water is a possibility.
- KOOLVAC is not a toy. Do not sit or stand on this device. Small children and pets should be supervised when KOOLVAC is in use.
- Do not use this device to pick up flammable or combustible liquids such as gasoline or smoking cigarette butts.
- If the room to be cleaned contains a balcony, a physical barrier should be used to prevent it from accessing to the balcony.
- The removable dustbin and air filter should be cleaned after each use and to be installed properly before the next use.
- Always remove the Battery Pack before long-term storage or transportation.
- If malfunction occurs, please refer to Troubleshooting or contact Koolatron. Do not attempt to repair or service KOOLVAC yourself. Refer all non-routine servicing to qualified service personnel.

Unpacking

After unpacking, please check that the list of parts was received:

- KOOLVAC
- Rechargeable Battery
- AC Adaptor
- Two Replacements Filters
- This Owner's Manual



Troubleshooting Tips

Your KOOLVAC may occasionally get stuck, especially in rooms that it has not cleaned before. If it gets stuck, KOOLVAC will try to free itself by turning in different direction or sound a beep to let you know it is stuck.

Your KOOLVAC might get stuck for several reasons.

- It is caught between narrowly spaced obstructions.
- It is pinned underneath a piece of furniture.
- Carpet's tassels, wires or cords are tangled with the wheels or brushes.
- One of the wheels is no longer in contact with the floor.
- It has bumped into an object and repositioned it in such a way that an exit path no longer exists.
- Please remove or block any objects that KOOLVAC gets stuck on or under.

Your KOOLVAC is not working or there had been a decrease in the cleaning performance

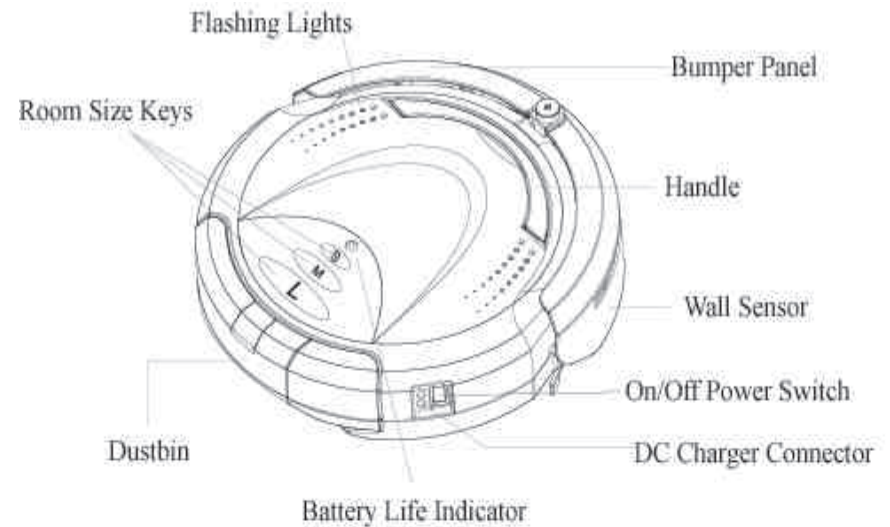
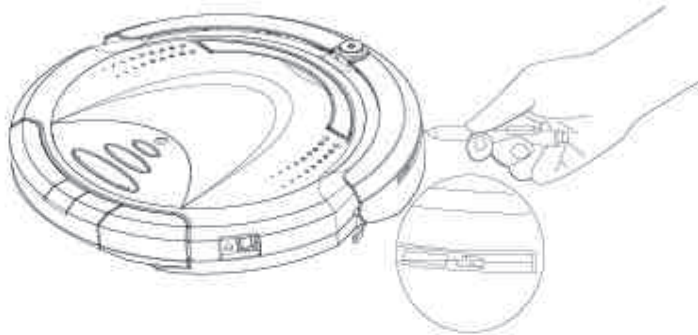
- Ensure that Battery Pack is properly installed and it is fully charged.
- Inspect the dustbin, filter mesh and vacuum inlet is cleaned after each cleaning session.
- Check the rotating brushes and drive wheels for interference.

The Battery Pack will not charge

- Ensure that the AC Adaptor is plugged into a working outlet; try several outlets to be sure.
- Ensure that the charging plug is fully inserted into KOOLVAC. The charging plug will only fit completely into the socket in the proper orientation.
- Ensure that the battery pack is properly inserted. To be sure, remove it, inspect the contacts both in the battery pack and KOOLVAC to make sure that they are not blocked by dirt and reinsert the battery pack. It should click into place on each side.

Adjusting the KOOLVAC wall clearance.

- To make the KOOLVAC follow closer to the wall, use a pen or similar pointed device to push the Adjustment Tab toward the rear of the Bumper. This will allow the side brush to clean closer to the wall.
- To make the KOOLVAC stay further from the wall, use a pen or similar pointed device to push the Adjustment Tab toward the center of the Bumper. This will keep the side brush from bumping into the walls.

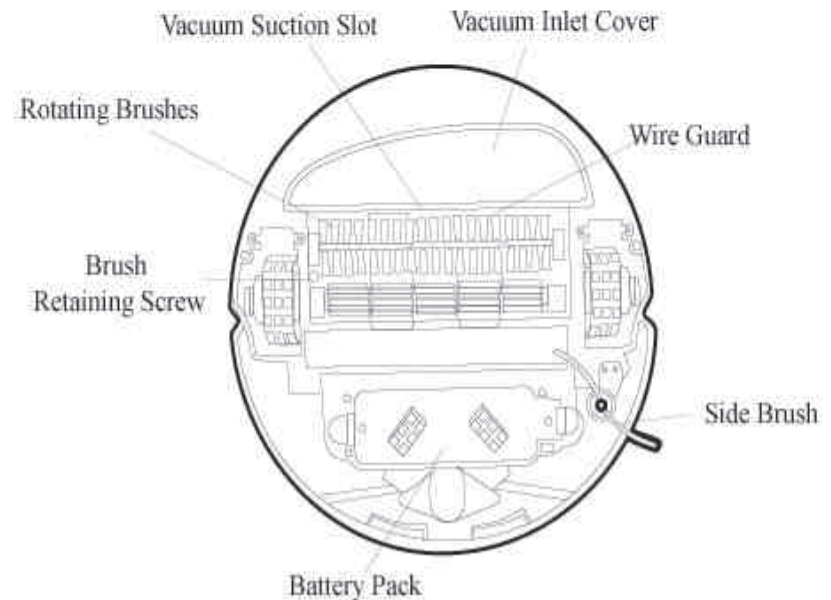


Side Brush Maintenance

1. Switch the unit OFF, and remove the dustbin.
2. Turn the KOOLVAC upside down, and remove the battery.
3. Spin the side brush to ensure it moves freely.
4. To replace the side brush the two cover screws must be removed.
5. Rotate the brush to expose the clamping screw, and remove screw.
6. Install a new side brush by pressing firmly onto the motor shaft.
7. Replace the clamping screw, and then replace the cover.
8. New side brushes can be obtained from Koolatron.

Replacement Parts

For all your parts and service requirements, please contact Koolatron. Replacement parts can be obtained from our Customer Service Department.



KOOLVAC Battery Pack And Charging

- Only use the battery charger supplied by the manufacturer.
Input: 120 Volts AC 60 Hz 0.3 A Output: 24 Volts DC 500 mA.
- Do not use a battery charger with a damaged cord or plug.
- Never handle plug, power cord or battery charger with wet hands.
- Always recharge the battery after use.
- KOOLVAC can run between about 60 minutes, on low pile carpet, to about 90 minutes, on smooth floor surfaces, on one full charge. In other words, it may clean 2-3 medium-sized rooms on a single charge.
- Under proper use and care, the rechargeable battery pack should last for a long time. Like all rechargeable batteries, eventually the battery pack will wear out and should be replaced. When this happens, the battery pack should be disposed of properly.
- Additional or replacement batteries are available from Koolatron.
- Always remove the battery pack and disconnect KOOLVAC from battery charger before cleaning KOOLVAC.

Battery Installation Procedure

1. Make sure power switch is turned off.
2. Ensure the dustbin is empty, and then place the KOOLVAC upside down on a flat surface.
3. Guide the battery pack into the battery compartment, and then apply light pressure to snap the battery into place. The battery will click into place when it is properly secured.



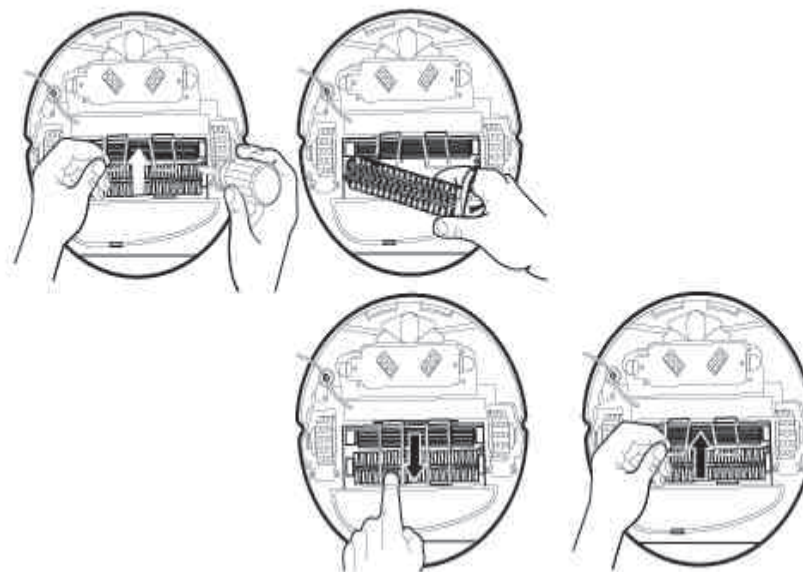
Battery Removal Procedure

1. Make sure Power Switch is in OFF mode.
2. Make sure the dustbin is empty, and then place the KOOLVAC upside down on a flat surface.
3. Press the release catches under both ends of the battery and lift out.

Cleaning the Roller Brushes.

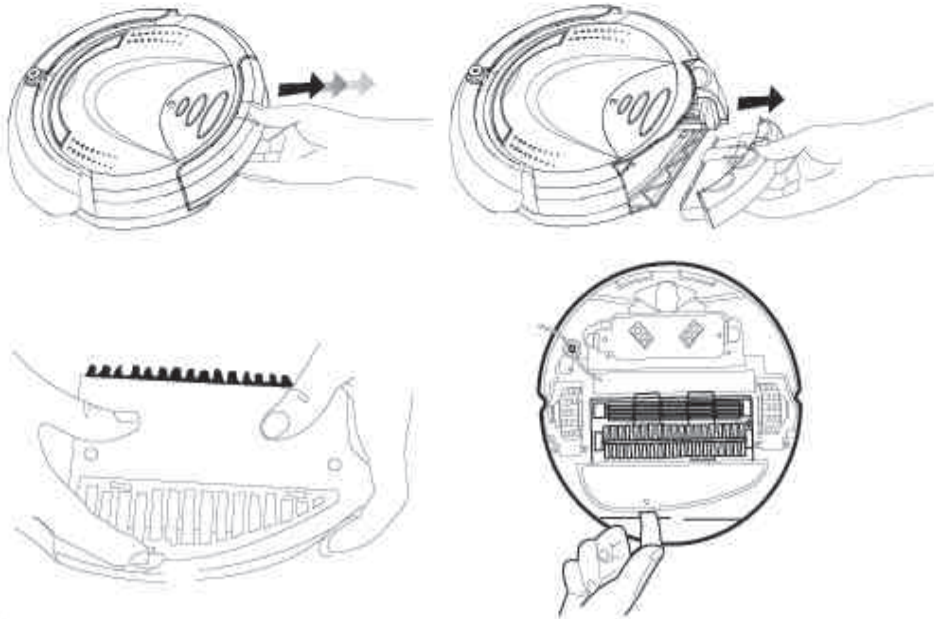
It is important to regularly remove and clean the brushes on the bottom of the KOOLVAC. Debris that accumulates around the brushes can decrease the cleaning ability and potentially damage KOOLVAC.

1. Switch the unit OFF, and remove the dustbin.
2. Turn the KOOLVAC upside down, and remove the battery.
3. Place the KOOLVAC so that the dustbin is facing you.
4. Release the wire guard by pressing on the tabs near the vacuum inlet cover, and rotate the wire guard backwards.
5. Remove the screw on the retaining cover on the right side of revolving brush.
6. Lift the retaining cover to remove the brushes from the brush compartment.
7. Remove all foreign material tangled on the brushes or in the ends of the brushes.
8. Reinstall the brushes by fitting the square ends into the square drive sockets, and the round ends into the retaining cover. Fasten the screw snugly, but do not over tighten.
9. Reinstall the wire guard by swinging down in behind the release tabs and down into the slots.
10. Reinstall the battery.
11. Replacement brushes and retainer are available from Koolatron.



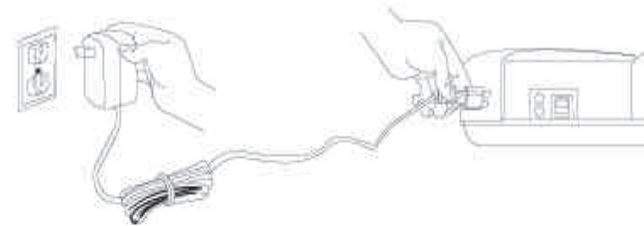
Procedures for Emptying Dustbin and Cleaning the Filter Mesh

1. Switch the unit OFF.
2. Press the dustbin release tab while simultaneously pulling the dustbin straight out.
3. Empty the dustbin into a trash receptacle.
4. Pinch tab to release the filter cover on the bottom of the dustbin.
5. Empty the filter compartment into a trash receptacle.
6. Pry the filter element from the filter frame.
7. Clean the dust collected on the filter, but please do not use water or detergent to clean it. If the filter mesh has worn out, replace it with a new one.
8. Reinstall filter onto the cover by guiding it into the grooves, then snapping into place.
9. Reinstall filter cover onto the dustbin by guiding it into the grooves, then snapping the other edge into place.
10. Reinstall the dustbin into the KOOLVAC.
11. Turn the KOOLVAC upside down.
12. Press tab to release the vacuum inlet cover, and remove the cover.
13. Empty any debris into a trash receptacle.
14. Spin the vacuum impeller to ensure it rotates freely.
15. Install the vacuum inlet cover by guiding it into the grooves, then snapping into place.



Battery Charging Procedure

1. Make sure Power Switch is in OFF mode.
2. Connect the AC adapter to wall outlet and then insert the charging plug into KOOLVAC's charging socket as shown.
3. The Charge Indicator Light on the Battery Charger should illuminate. If this fails to occur, remove and reinstall the Battery Pack. Note that no light is illuminated on KOOLVAC itself when it is charging.
4. The Charge Indicator Light will turn off automatically when the Battery Pack is fully charged (approximately twelve hours for a fully discharged Battery Pack)



Battery Life Indicator

The battery life indicator is functional only when KOOLVAC's power switch is turned on. The indicator will flash green in stand-by mode (battery power is not sensed) until a room size key is pressed to start cleaning, the Battery Life indicator stops flashing, and displays battery life according to the following chart.

Battery Life Indicator	Battery status
Green	Fully Charged
Amber	Partially Discharged
Red	Almost Discharged
Flashing Red	Fully Discharged

Using Your KOOLVAC

Setting Up The Room For Cleaning

- The KOOLVAC is not recommended for use on deep-pile or shag carpets. On carpets with tassels or fringed edges, tuck the tassels underneath the edge of the rug.
- For optimal cleaning performance, clear your floor of objects just as you would before using a regular vacuum cleaner. Do not leave the following items on the floor: clothing, loose papers, pull cords for blinds or curtains, power cords or any fragile items. In addition, because KOOLVAC contacts walls, furniture and other objects as it cleans, please remove any items that may be pushed and knocked over by light contact.
- KOOLVAC is designed to clean one room at a time. Confine KOOLVAC to the room you want to clean by closing all doors.
- KOOLVAC will automatically detect stairs and turns away from them. However, if the room to be cleaned contains a balcony, a physical barrier should be used to prevent it from accessing the edges of the balcony.
- Pets and small children should be kept from the room while the KOOLVAC is operating.
- Supervise the operation of the KOOLVAC the first time it is used in a room. This will allow you to observe areas that it may get stuck in, or areas it may not find. The more open the room is the better. A lot of obstructions such as chair or table legs may confuse the KOOLVAC. The more complicated the room, the longer it will take the KOOLVAC to completely clean it. You may need to use a larger room setting to provide enough time for complete coverage.
- Occasionally while cleaning, KOOLVAC may encounter furniture like this dresser that's just right for KOOLVAC to get pinched underneath and stuck.
- If the KOOLVAC unable to turn out, it will automatically give off a "Bi-Bi" warning sound, just pull KOOLVAC out and set it to work again.
- You may also use potted plant to block or even elevate the dresser so that KOOLVAC can clean under it.
- Sometimes KOOLVAC can get trapped behind furniture because the entrance to an area is just barely big enough for KOOLVAC to fit through.
- Rearranging some of the furniture so that KOOLVAC will not get stuck in the same position again.
- Sometimes KOOLVAC can bump into small items that can spill and make a mess.
- To ensure effective cleaning, please pick up small items.

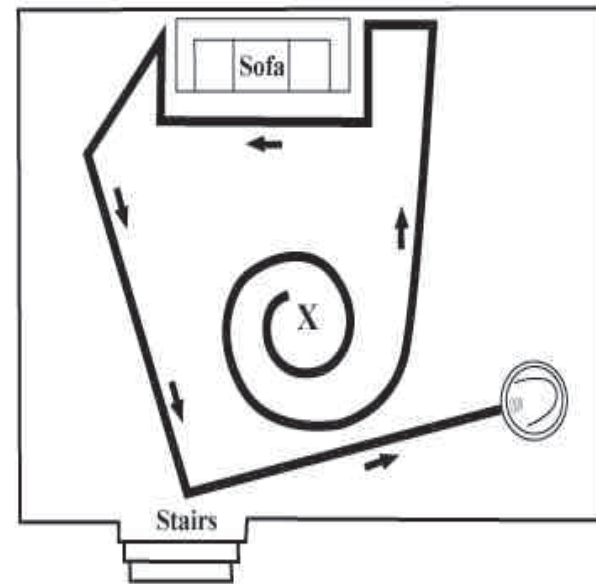
6.

Starting KOOLVAC

- Always ensure the dustbin is empty before use.
- Place KOOLVAC on the floor in the middle of an open area in the room.
- Turn on the power switch, located on the right side of the device.
- Select your room size according to this chart, and KOOLVAC will play a short tune and start cleaning.

Room Size	Approximate	Approximate
Key	Room Size	Cleaning Time
S	10' X 12'	20 ~ 25 min
M	14' X 16'	25 ~ 35 min.
L	15' X 20'	35 ~ 50 min.

- When KOOLVAC finished cleaning, it will play a tune for several seconds to tell you that it is done, and then it will turn itself off.



Stopping or Pausing KOOLVAC

- To pause, pick it up by its handle. To resume cleaning, press the flashing key.
- To stop, press any one of the Room Size keys while it is cleaning, or turn off the power switch.
- After vacuuming, please hold the handle with both hands, do not allow the KOOLVAC to tip to avoid scattering dust and dirt on the floor.
- Empty the dustbin.

7.