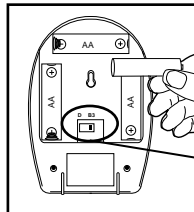
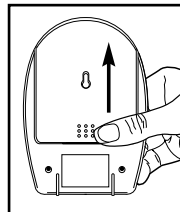
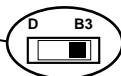


PET CHIME™:

1. To open the battery compartment cover, press the dots, then push and slide upwards.
2. Insert three AA batteries, following the + and - diagram in the cavity for correct placement.



3. Select a chime:
D = Regular (Ding-Dong)
B3 = (Woof-Woof)
4. Reattach compartment cover.



IMPORTANT NOTICE

Should another PET CHIME™ PET PAW™ nearby activate your chime, you can set your own ringing code by disconnecting a wire in both the remote control and the chime. The PET PAW™ has a RED and GREEN wire in the battery case. Likewise, the chime has RED and GREEN wire in selection recess. To set your own ringing code, simply cut either the RED wires on both units or the GREEN wires on both units. **WARNING: If you cut one RED and one GREEN or all FOUR (4) wires, you will disable the whole unit.**

This device complies with part 15 of the FCC rules. Operation is subject to the following two conditions: 1) This device may not cause harmful interference and 2) This device must accept any interference received, including interference that may cause undesired operation.

Changes or modifications not expressly approved by the party responsible for compliance could void the users authority to operate the equipment.

LENTEK WARRANTY



Purchase Date _____

This Limited Warranty is effective upon purchase. Please complete the attached Registration and return to Lentek International.

1. Lentek International warrants this product to be free of manufacturing defects. Should any such defect develop or become evident within ONE year from the date of purchase, Lentek International will replace the entire product or, at its option, repair or replace the defective part(s) without charge.
2. Securely pack the entire unit. Be sure carton clearly identifies sender by name and address. Attach a letter or card describing the defect. Original receipt of purchase must be included in returned package for warranty coverage.
3. This warranty is void if damage or malfunction is due to abuse or failure to operate product in accordance with instructions and on recommended electrical current.

Mail prepaid via insured parcel post to:

LENTEK INTERNATIONAL • WARRANTY DEPARTMENT
1629 PRIME COURT • SUITE 800 • ORLANDO, FL 32809



LENTEK INTERNATIONAL INC.
P.O. Box 593812
Orlando, FL 32859-3812

Phone: 407-857-8786
Fax: 407-857-4045
Toll Free: 888-3LENTEK
Email: customerservice@lentek.com



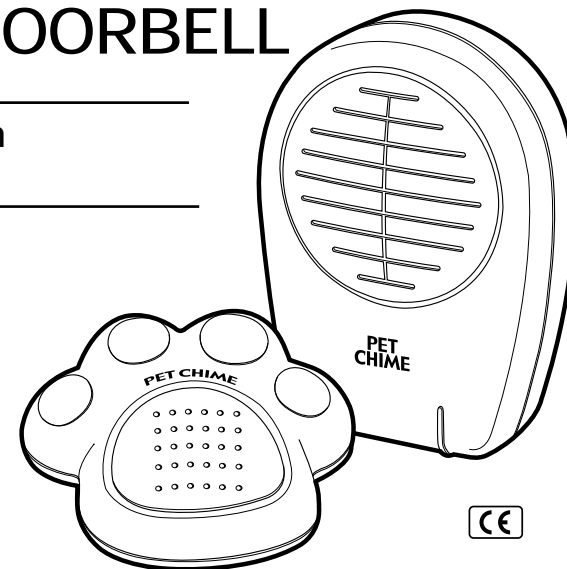
© 2001 Lentek International. All rights reserved.
All specifications are subject to change without notice.
Dimensions are approximate.

INSTPP10-0401

PET CHIME™

**PORTABLE WIRELESS
ELECTRONIC
PET DOORBELL**

instruction
guide

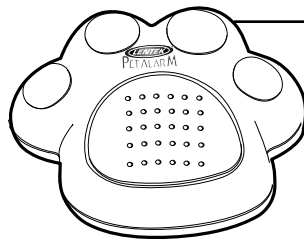


PP-10



CONTENTS:

The PET CHIME™ consists of the following 2 units:



Pet Paw™

- Easy battery replacement
- Operates on one 9V battery (not included)



Pet Chime™

- Wireless chime operates up to 100 ft. from the Pet Paw™
- Wall mountable or stand on shelf.
- Operates on three AA batteries (not included)

TRAINING INSTRUCTIONS:

Training your pet to use the PET CHIME™:

The pet chime is easy to teach your pet to use. First allow your dog to get used to the sounding of the chime. Place the PAW next to the door that you will be training your animal to go out. With the PAW on the floor, place your hand on the

device showing your pet how the chime works. Next push the PAW to sound the chime and open the front door tossing out a treat so to entice your pet to retrieve it. Once your dog has gone outside fetch him back in. Repeat the procedure several times. Always placing your hand onto the paw so that the chime rings before opening the door.

Once your dog is accustomed to the activity place their paw on the chime stating: **Do you want to go out? Do you want to go out?** Assist the dog in activating the chime rewarding him when he does. Repeat the activity assisting the dog to ring the chime and then opening the door until the dog is comfortable with stepping on the paw on its own.

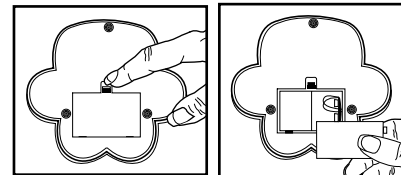
The Pet Touch™ technology will allow any size dog to easily activate the chime. The activity must be repeated so that your pet will know that when they want to go out they must use PET CHIME™.

Each pet's behavior varies. It is important to make sure that the activity is repeated and done by every member of the family. The adaptation of your pet using the PET CHIME™ is dependent on your training.

INSTALLATION AND OPERATION INSTRUCTIONS:

PET PAW™:

1. To remove battery compartment cover, pinch rear clasp to release.
2. Insert one 9-V battery.
3. Reattach compartment cover.



Dear Customer,

Thank you and congratulations on your purchase of this ingenious device. This product is the latest in new technology from Lentek™. We back our product with a one (1) year limited warranty. Your satisfaction is very important to us.

Visit our website at: www.lentek.com and view the rest of our products, such as our Sila™ line, Pet Appliance, Biagianté and PestContro™ pest control devices. While you're there, register your new purchase, sign up to receive our newsletter, and learn more about our company.

Questions can also be asked on our website, or you can call: 1-888-3-LENTEK, or 407-857-8786 or contact your local Lentek dealer.

We look forward to serving you, now and in the future.

Enjoy!

Joe
Joe Durek
CEO

Lou
Lou Lentine
President

