

LENTEK WARRANTY

Pest**Contro**[®]

Purchase Date _____

This Limited Warranty is effective upon purchase.
Please complete the attached Registration and return to Lentek International.

1. Lentek International warrants this product to be free of manufacturing defects. Should any such defect develop or become evident within ONE year from the date of purchase, Lentek International will replace the entire product or, at its option, repair or replace the defective part(s) without charge.
2. Securely pack the entire unit. Be sure carton clearly identifies sender by name and address. Attach a letter or card describing the defect. Original receipt of purchase must be included in returned package for warranty coverage.
3. This warranty is void if damage or malfunction is due to abuse or failure to operate product in accordance with instructions and on recommended electrical current.

Mail prepaid via insured parcel post to:

LENTEK INTERNATIONAL • WARRANTY DEPARTMENT
1629 PRIME COURT • SUITE 800 • ORLANDO, FL 32809

LENTEK[®]

LENTEK INTERNATIONAL INC.
P.O. Box 593812
Orlando, FL 32859-3812

Phone: 407-857-8786
Fax: 407-857-4045
Toll Free: 888-3LENTEK
Email: customerservice@lentek.com

visit us on the web:
www.lentek.com[™]



© 2002 Lentek International. All rights reserved. REVINSTYC12-0602
All specifications are subject to change without notice.
Dimensions are approximate.

YC12

LENTEK YardContro⁺

Electronic Yard Fence



DIRECTIONS FOR USE

Dear Customer,

Thank you and congratulations on your purchase of this ingenious device. This product is the latest in new technology from Lentek™. We back our product with a one (1) year limited warranty. Your satisfaction is very important to us.

Visit our website at: www.lentek.com and view the rest of our products, such as our Sila™ line, Pet Appliance™, Biagiante™ and PestContro® pest control devices. While you're there, register your new purchase, sign up to receive our newsletter, and learn more about our company.

Questions can also be asked on our website, or you can call: 1-888-3-LENTEK, or 407-857-8786 or contact your local Lentek dealer.

We look forward to serving you, now and in the future.

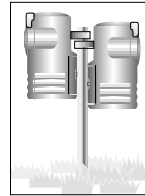
Enjoy!

Joe

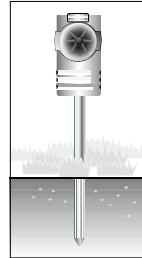
Joe Durek
CEO

Lou

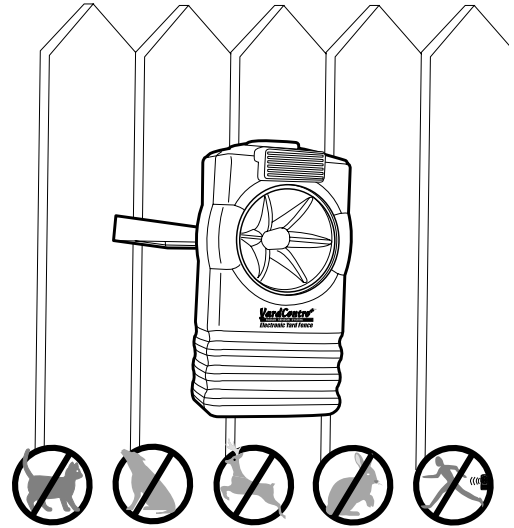
Lou Lentine
President



ADD ON EXTENSIONS



MOLE CHASER ATTACHMENT



NOTE

This unit has been tested and found to comply with Part 15 of the FCC Rules. These limits are designed to provide reasonable protection against harmful interference in a residential installation. This unit generates, uses, and can radiate radio frequency energy and, if not installed and used in accordance with the instructions, may cause harmful interference to radio communications. However, there is no guarantee that interference will not occur in a particular installation. If this unit does cause harmful interference to radio or television reception, which can be determined by turning the unit off and on, the user is encouraged to try to correct the interference by one or more of the following measures:

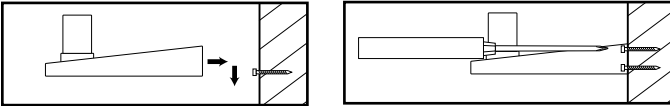
- Reorient or relocate the receiving antenna.
- Increase the separation between the unit and receiver.
- Connect the unit into an outlet on a circuit different from that to which the receiver is connected.
- Consult the dealer or an experienced radio TV technician for assistance.

CARE & MAINTENANCE

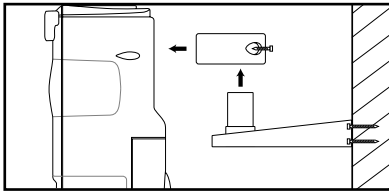
- Do not operate this unit outdoors when using an AC adapter.
- Do not immerse this unit in water or any other liquid.
- Unplug before cleaning.
- Clean with water or a mild detergent only.
- Do not use harsh solvents on any part of this product.

INSTALLATION / MOUNTING:

Wall Mount

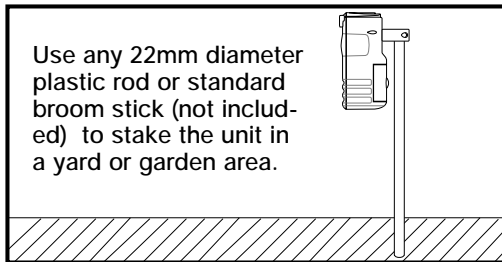


Fix the bracket to the wall or any vertical surface by using 3 long screws. Fasten the middle screw FIRST.



Use 2 short screws to attach the unit connector to the unit. Then put the unit onto the bracket. Turn the unit in the direction you want it to face.

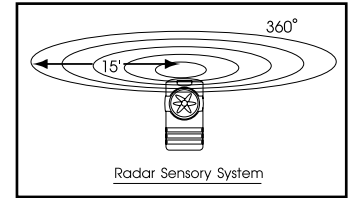
Post Mount



Use any 22mm diameter plastic rod or standard broom stick (not included) to stake the unit in a yard or garden area.

PRODUCT DESCRIPTION

The YardContro+ is an unobtrusive sound generator that keeps stray and unwanted dogs, cats, deer, and other wild animals, and even humans out of your yard and gardens. The unit is equipped with a 360-degree motion detection sensory system that senses motion from all directions up to a 15-foot radius. It creates an invisible radar zone of approximately 700 sq. feet. When the unit detects an intrusion, it responds by emitting a high frequency 120-decibel sound blast to deter the trespasser. Ultrasonic blasts in the upper end of the frequency range are intolerable to the above-mentioned animals. When used as directed, the unit can effectively keep stray animals away.

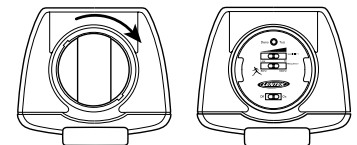


HOW THE RADAR SYSTEM WORKS

Lentek's Radar Sensor System uses the latest in motion-sensing technology. After the unit is turned on, please allow 15-20 seconds for the system to activate. Once set, the radar motion detector will check for motion up to 15' in all directions every 5-10 seconds, sending out a preset ultrasonic sound pattern and activating the high-intensity xenon-effect strobe if movement is detected. Activation period may vary depending on factory settings.

CONTROL COVER

There is a control cover located on the top of the unit. It can be removed by giving it 1/8th of a turn clockwise, then lifting the cover off.



WARNING

HIGH OUTPUT SOUND WAVES CAN CAUSE HEARING DAMAGE. BE CAREFUL NOT TO HAVE YOUR EARS CLOSE TO THE UNIT. DO NOT LET CHILDREN PLAY WITH TEST BUTTON.

CONTROL PANEL

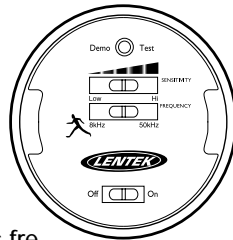
Demo/Test Button

The user can press this button to hear that the ultrasonic feature is working. This test enables the user to achieve the desired setting, and to confirm operation of the product. If the high frequency (50kHz) is being used, it is inaudible to humans, but it may produce a clicking sound. This clicking sound confirms proper operation.

OPERATION

Sensitivity Switch

- Slide to **HI** for maximum coverage area (up to 15 feet from unit)
- Slide to **LOW** for smaller coverage area
- Adjust in-between for desired coverage area.



Frequency Adjustment

Slide this control to set the ultrasonic frequency in the range most effective to repel your particular problem animal. The frequency range can be set from low (8kHz) to high (50kHz), providing an effective ultrasonic deterrent for most animals. Generally, larger animals (such as deer) are repelled by lower frequencies, and smaller animals (such as rodents) are repelled by higher frequencies. Experiment and fine-tune the unit to determine which frequency works best in your target environment. The xenon-effect strobe will activate at any frequency.

Note: For an audible intruder alarm, set the slide to the lowest frequency (8kHz).

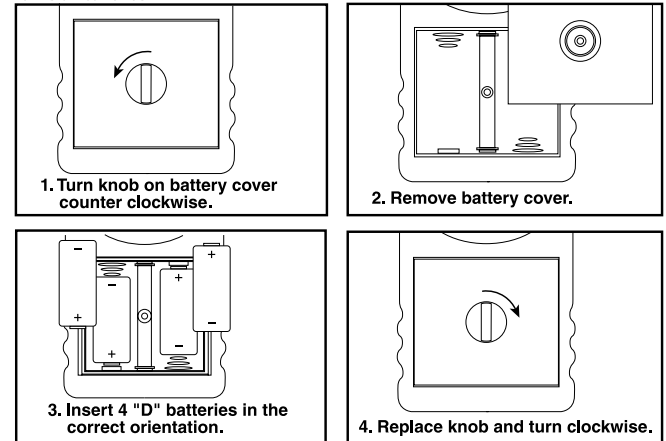
Power Switch

Switch to ON to activate the unit.

BATTERIES

The YardContro+ Electronic Yard Fence uses four "D" batteries (alkaline recommended), or an optional AC power adapter.

To install batteries



Battery Life: The batteries last at least 2,000 sound releases (10 seconds per sound release)

